

Self-Propelled Jack-Up/Liftboat

ELECTRIC JACKING SYSTEM WITH JACK AND PINION

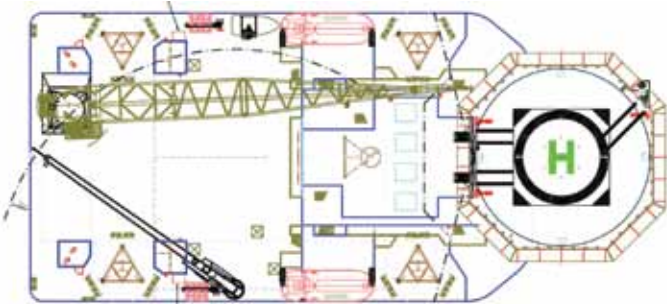
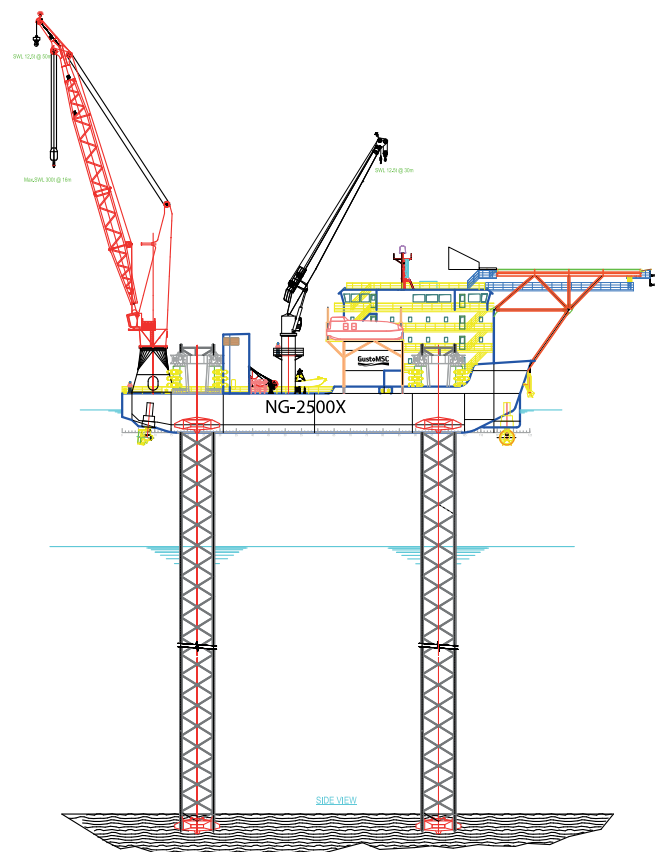
Effective lifting capacity/ pinion	90t
Average pre-load holding	153 t
Maximum pre-load holding	204 t
Ultimate holding capacity	260 t
Platform lifting and lowering speed	Up to 0.8m/min

MAJOR EQUIPMENT

Main Engine	4 x 1500 kw, 690v
Emergency Engine	1 x 480 kw, 480v
Propulsion System	2 x 1200 kw (AFT) 2 x 1200 kw (FWD)
Dynamic Positioning	DPS-2
Main Crane	300 t at 16m Boom Length 45m
Auxiliary Crane	12.5 t at 30m Boom Length 30m

DECK LOADING

Variable Load	1300 t
Main Deck	10 t/m ² for deck plating and stiffeners 5 t/m ² for girders over full length
Machinery Area	1 t/m ²
Stores	2 t/m ²
Deck Area	800m ²



PROCESS MODULES

Eversendai's EPCC Oil & Gas project secured from Petronas Carigali Iraq BV for **Garraf Development Facility Operation**. Our scope of work:

- i) EPCC and Supply of Fuel Gas Conditioning Unit (FGCU)
- ii) EPCC and Supply of Compressor Package
- iii) EPCC and Supply of Fully Equipped & Commissioned Mini-Substation with Transformer



EVERSENDAI



Self-Propelled Jack-Up

Self-propelled jack-ups, referred to as liftboats, are able to provide well services support at offshore platforms and wellhead structures.

Eversendai has the capability to build self-propelled jack-ups/liftboats with our team of qualified and experienced personnel without compromising on quality and delivery.

Each self-propelled jack-up/liftboat will consist of a rectangular hull and four 95-metre, truss-type legs with an electric driven rack and pinion jacking system, which will allow the unit to jack up in water depths of up to a maximum of 70 metres.

The self-propelled jack-up/liftboat's primary operating capabilities include accommodation for a minimum of 150 personnel, the ability to propel by its own thrusters to a speed of 5 knots and Dynamic Positioning System DPS-2.

These would provide effective solutions to offshore operations and maintenance.



www.eversendai.com

EVERSENDAI OIL & GAS (M) SDN BHD

Level 5, Menara Mudajaya,
12A, Jalan PJU 7/3, Mutiara Damansara,
47810 Petaling Jaya,
Selangor Darul Ehsan, Malaysia.
Tel : +603 7710 3362
Fax : +603 7733 3352
Email : evsog@eversendai.com

EVERSENDAI OFFSHORE RMC FZE

RAK Maritime City,
P.O. Box 5130,
Ras Al Khaimah
United Arab Emirates.
Tel : +971 4 456 4815
Fax : +971 4 456 4833
Email : contactus@eversendaioffshore.com

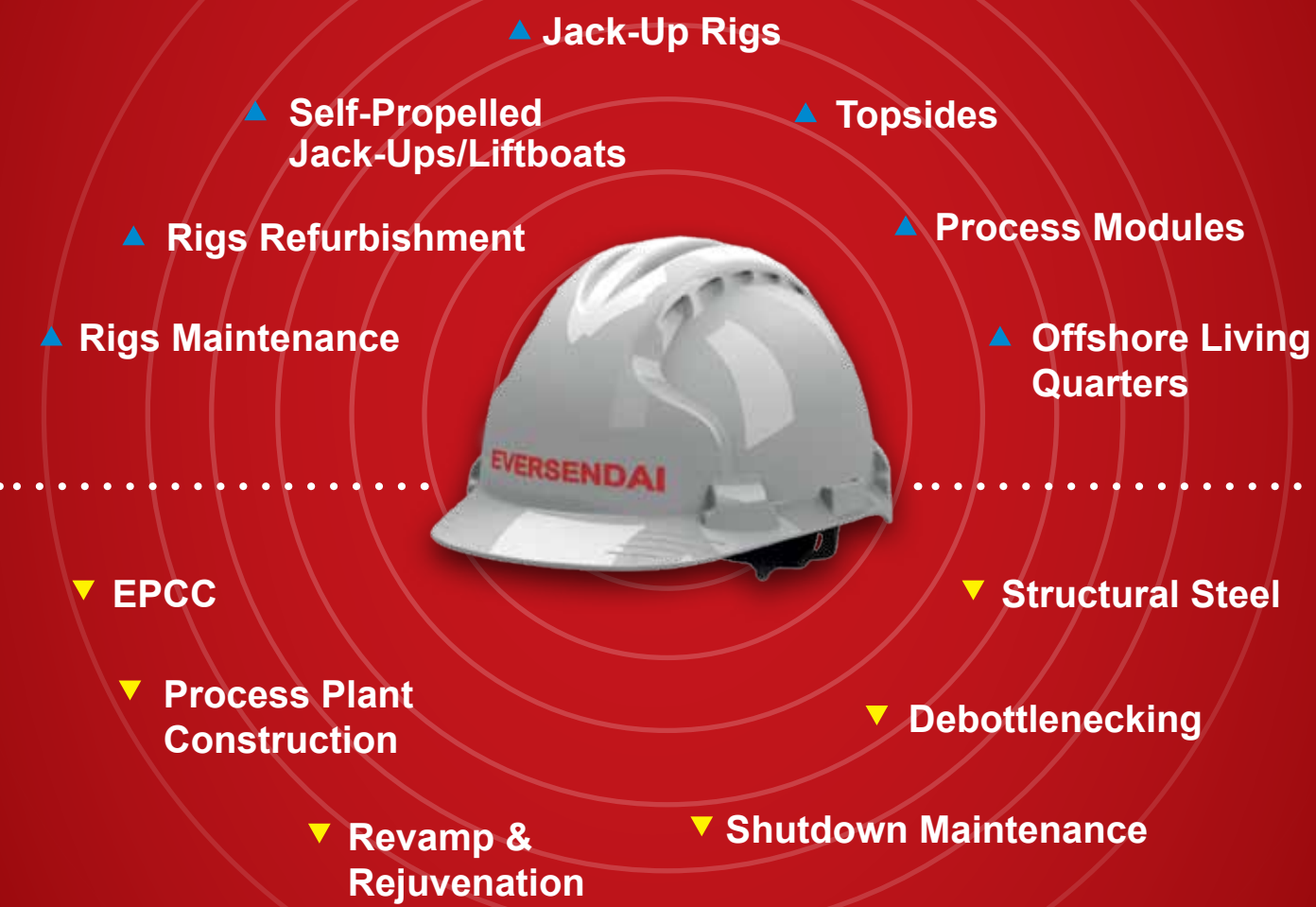
45th Floor, Vision Tower,
Al Khaleej Al Tejari Street 1, Business Bay,
P.O Box 116654,
Dubai, United Arab Emirates.
Tel : +971 4 456 4815
Fax : +971 4 456 4833
Email : contactus@eversendaioffshore.com

MOVING TO NEW FRONTIERS

UPSTREAM

EVERSENDAI OFFSHORE is an established contractor specialising in complex fabrication projects ranging from medium sized to large EPCC projects. Our core focus is in New Build Jack-Up Rigs, New Build Offshore, Rig Refurbishment, Process Modules including Early/Central Production Facilities, Offshore Living Quarters and Self-Propelled Jack-Ups/ Liftboats.

OUR SCOPE OF WORK



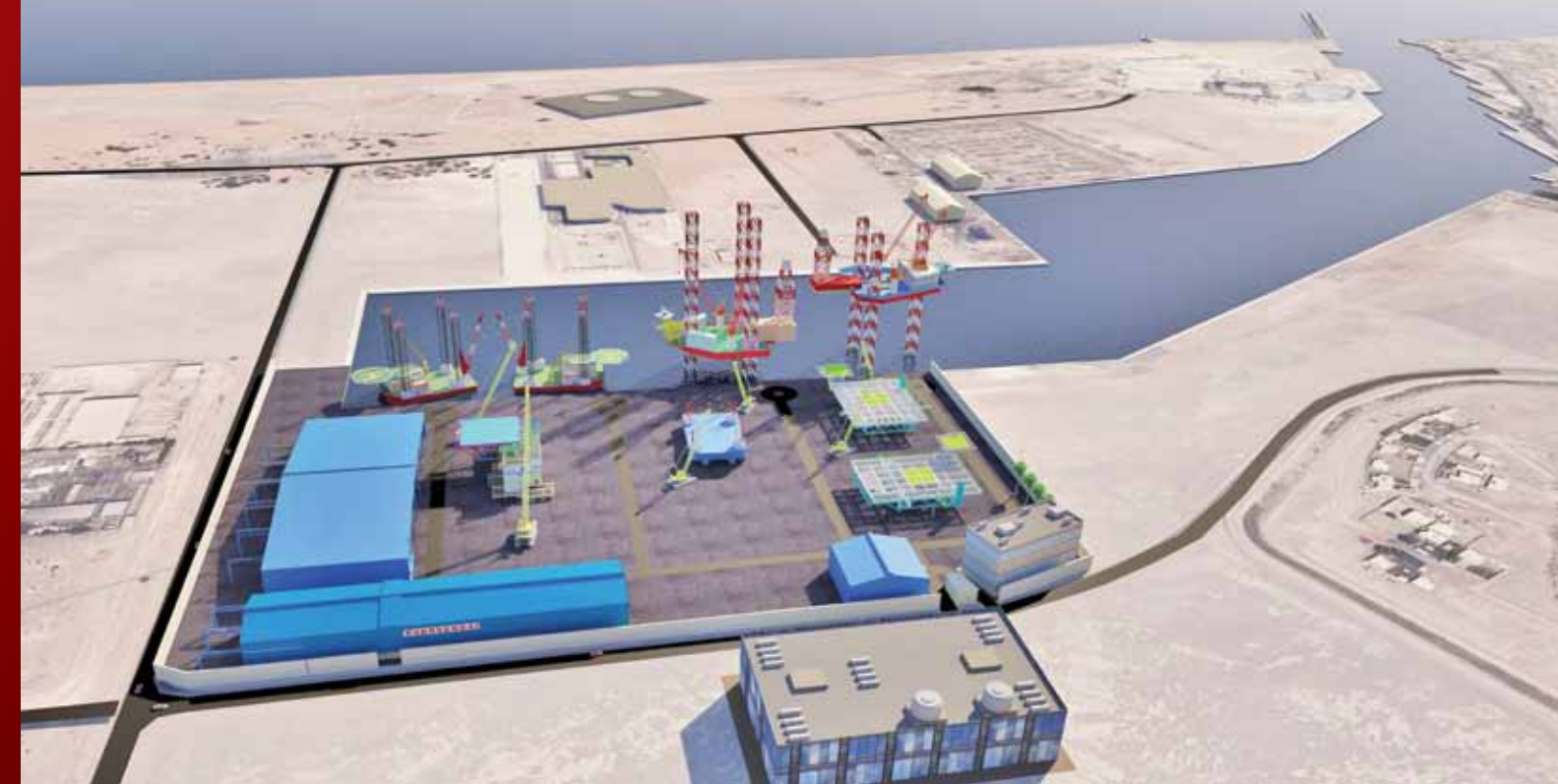
DOWNSTREAM

EVERSENDAI OIL & GAS has the experience combined with engineering, fabrication and construction resources to execute EPCC contracts for Oil & Gas, Petrochemical and other related projects worldwide.

FACILITIES

Rak Maritime City, Ras Al Khaimah

Total Land Area	: 200,000 sq metres	Assembly Area	: 82,720 sq metres
Quayside	: 550 metres	Total Covered Fabrication Area	: 27,920 sq metres
Open Yard	: 82,720 sq metres	Water Depth	: 7 metres
Total Warehouse & Storage	: 16,956 sq metres		



In keeping with Eversendai Group's objective to enhance its premier position in the business through engineering excellence and specialist construction services, the company has further developed its fabrication capacity to accommodate Eversendai's growing number of projects, boasting a combined annual fabrication capacity of over 150,000 metric tonnes.

Eversendai produces high quality fabricated structures and has the accreditation and certification from ASME Boiler and Pressure Code U, U2, S and the R Symbol from the National Board of Boilers and Pressure Vessel Inspectors, for our facility at Hamriyah Free Zone, Sharjah, U.A.E .

All our fabrication factories are strategically located and have the capability and the capacity to fabricate and export high quality fabricated structures to any part of the world on time. Our fabrication factories are located at:

Rawang, Malaysia

Total Area	: 65,412 sq metres
Total Building Area	: 24,651 sq metres
Open Yard Area	: 40,761 sq metres
Fabrication Capacity	: 24,000 tonnes



Al Qusais Industrial, Dubai

Total Area	: 12,000 sq metres
Total Building Area	: 8,000 sq metres
Open Yard Area	: 4,000 sq metres
Fabrication Capacity	: 12,000 tonnes



Trichy, India

Total Area	: 156,335 sq metres
Total Building Area	: 9,040 sq metres
Open Yard Area	: 147,294 sq metres
Fabrication Capacity	: 30,000 tonnes



Industrial Area, Doha Qatar

Total Area	: 39,479 sq metres
Total Building Area	: 16,128 sq metres
Open Yard Area	: 18,720 sq metres
Fabrication Capacity	: 24,000 tonnes



Hamriyah Free, Zone Sharjah

Total Area	: 211,168 sq metres
Total Building Area	: 63,781 sq metres
Open Yard Area	: 147,387sq metres
Fabrication Capacity	: 60,000 tonnes



PROJECT HIGHLIGHTS

Kemaman Bitumen Refinery, Malaysia



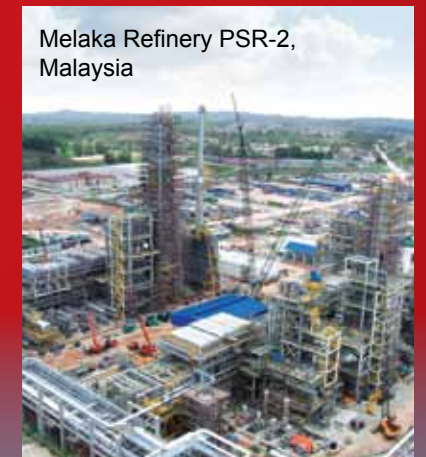
Sabah Oil & Gas Terminal, Malaysia



ASEAN Bintulu Fertilizer Plant, Malaysia



Tokuyama Polycrystalline Silicon Plant, Malaysia



Melaka Refinery PSR-2, Malaysia



Nakilat Damen Shipyard Phase 4, Qatar