

Moving To
NEW
FRONTIERS

EVERSEND

OIL & GAS



“Moving To NEW FRONTIERS”



EVERSENDAI OIL & GAS (M) SDN. BHD has 30 years of construction experience in the Oil and Gas, Power and Civil construction industries as a result of amalgamation between Eversendai Corporation Berhad and Sumatec Engineering & Construction Sdn. Bhd.

The history of Eversendai Corporation began in 1984 when they first commenced operations. After three decades of unparalleled experience, technical expertise and a strong network across various countries, Eversendai is recognised as a global frontrunner in undertaking turnkey structural steel works; delivering projects for high rise buildings, power and industrial plants as well as infrastructure and general civil construction in the Asian and Middle Eastern regions.

Eversendai Corporation's mechanical installation work experience commenced with the 2100MW Manjung Power Plant in the year 2000. Other notable projects include the 1000MW and 2100MW Tanjung Bin Power Plant, 1400MW Jimah Power Plant, 1000MW Manjung Power Plant in Malaysia and the 2 x 300MW EMCO Thermal Power Plant in India amongst many others.

An established management which overlooks the areas of planning, procurement, HSE and execution, combined with experienced managers, engineers and a skilled work force specialising in installation of all mechanical works such as pressure parts, non-pressure parts, piping, heat treatment, equipment, ducting, insulation, electrical, painting and all pre-commissioning works has made Eversendai Corporation a leading and innovative global organisation. Eversendai Corporation has a dedicated and loyal workforce of over 10,000 people and an impressive

portfolio of more than 250 accomplished projects in over 12 different countries with 5 steel fabrication factories located in Malaysia, Dubai, Sharjah, Qatar and India with an annual capacity of 150,000 tonnes.

Sumatec Engineering & Construction was established in 1979 and has undertaken various specialized Engineering, Procurement, Construction and Commissioning (EPCC) contracts for the Oil & Gas and Petrochemical industry, both, within Malaysia and overseas. Over the years, Sumatec Engineering & Construction has built strong capability in handling total integrated multi-disciplinary construction packages involving all phases of construction work which include civil and building, structural and steel fabrication and erection, mechanical piping, tankage, process equipment erection and electrical and instrumentation works.

With extensive Oil & Gas project execution experience combined with engineering, fabrication and construction resources, Eversendai Oil & Gas is well equipped to execute EPCC contracts for Oil & Gas, Petrochemical and other related projects worldwide. As we move to new frontiers, we are certain we will be able to provide our clients the certainty and comfort of knowing that their projects are in capable and experienced hands, and we will deliver as committed.

This is just the beginning

Tan Sri A.K. Nathan
Executive Chairman
And Group Managing Director

OUR VISION

- TO MAINTAIN OUR CORE VALUES AND CONTINUOUSLY INNOVATE AS WE MOVE TO NEW FRONTIERS.

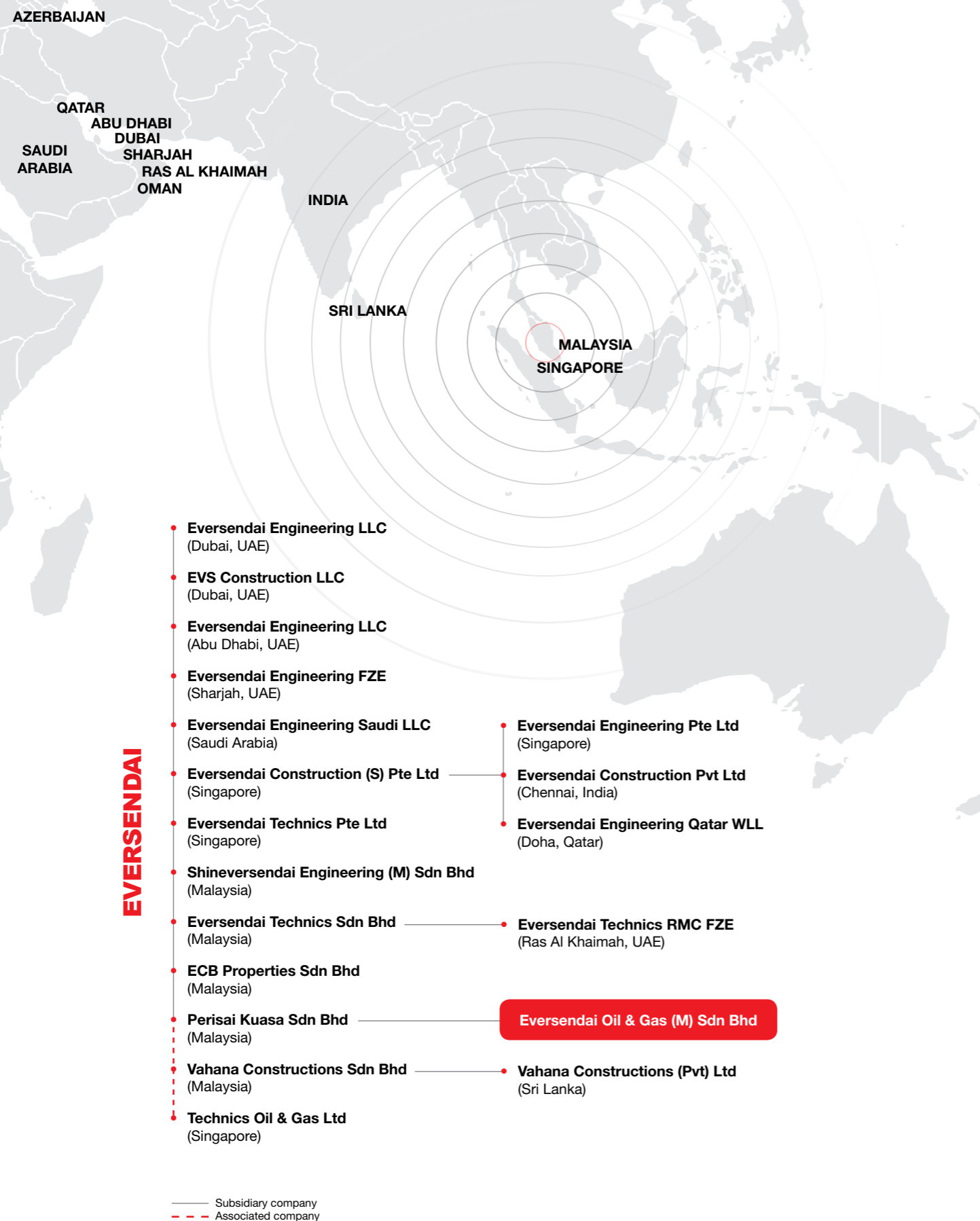
OUR MISSION

- To excel in delivering our commitment to our clients while strengthening and forging new ties. We endeavour to maintain and enhance our consistent performance, work culture and standards. Maximising the value of human capital and aligning it with company initiatives is also a fundamental element of our business objective.

OUR CORE VALUES

- COMPLIANCE TO **SAFETY**
- CONFORMANCE TO **QUALITY**
- ADHERENCE TO **SCHEDULE**
- CONSISTENT **CLIENT SATISFACTION**

OUR GLOBAL NETWORK



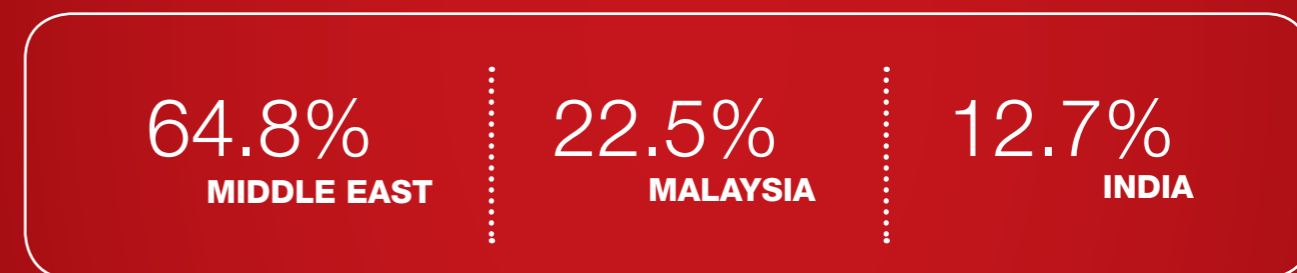
KEY FACTS

OUR GROUP'S TURNOVER

RM'million

2008	2009	2010	2011	2012
783.3	817.1	744.9	1,033.7	1,021.3

OUR MARKETS



OUR BUSINESS STRUCTURE



OUR **QUALITY** POLICY

We are committed to providing our customers with high quality products and services in all our business operations which meets or exceeds the customer requirements.

Our commitment is supported by our best endeavours through continual improvement in competitively and consistently maintaining productivity by effectively managing the following:

- Ensuring a Quality Management System is implemented, reviewed and maintained, **certifiable to an international standard**.
- Ensuring that all our contract and project management plans are monitored and managed efficiently and effectively for **in time completion of projects**.
- Establishing and measuring **performance and customer satisfaction** against appropriate periodically reviewed quality objectives and indicators.
- Monitoring and evaluating the quality performance of all our employees, consultants, subcontractors and suppliers and implementing effective communication with them on **quality conformance and compliance** requirements.
- Establishing appropriate responsibilities, accountabilities and authority for Quality at all levels and educating and training our people to **continually improve awareness, knowledge and skills** on quality issues and practices.
- Ensuring this visible Quality Policy is **reviewed for continuing suitability**, communicated to and understood within the organisation.

Our commitment and adherence to this **QUALITY** policy is the responsibility of Management, Employees and all those working on our behalf.

OUR **HEALTH, SAFETY & ENVIRONMENT** POLICY

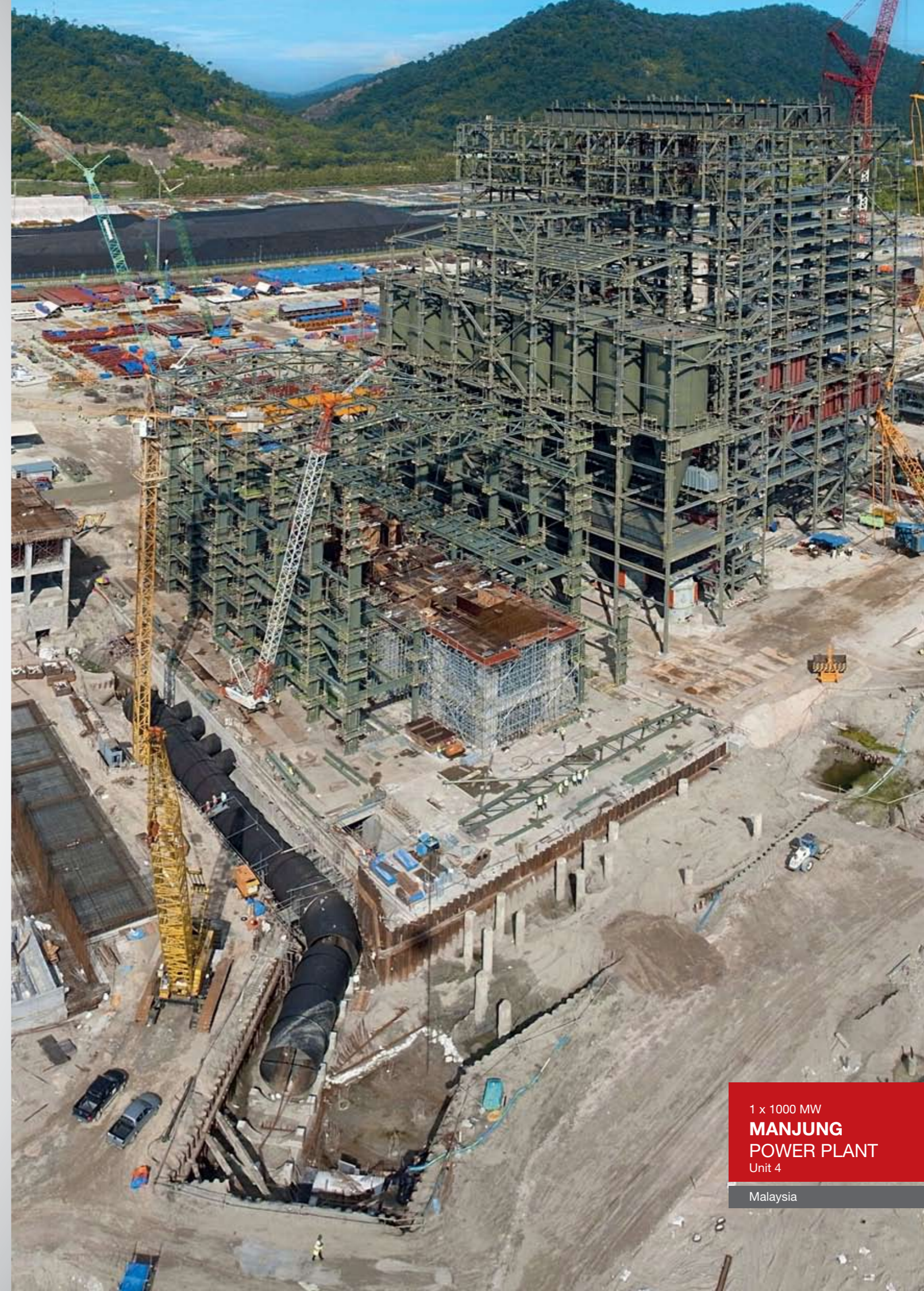
Our commitment is supported by our best endeavours through continual improvement in HSE performance to maintain a workplace culture by effectively managing the following:

- Ensuring a HSE Management System is implemented, reviewed and maintained, **certifiable to an international standard**.
- **Enforcing full compliance** with all applicable legal requirements and conformance to other requirements relevant to the organisation's operations.
- Providing and **maintaining safe working conditions** through periodic inspections of site, equipment and procedures, to prevent injury, ill health and environment pollution.
- Undertaking potential risk assessment, aspect and impact assessment, waste minimisation and optimised use of resources through the **3R concept of Reduce, Reuse and Recycle**.
- Establishing appropriate responsibilities, accountabilities and authority for HSE at all levels and providing necessary resources, accurate information and relevant training to all employees to **fulfil their HSE obligations**.
- Establishing and reviewing HSE objectives periodically with employee consultation, encouraging active participation and contribution in all HSE programs of **maintaining employee well-being** and **preventing environment pollution**.
- Ensuring this visible HSE policy is **reviewed for continuing relevancy**, communicated to all persons within the organisation and made available to all the interested parties.

Our commitment and adherence to this **HEALTH, SAFETY and ENVIRONMENT** policy is the responsibility of Management, Employees and all those working on our behalf.

We are committed to maintain a high standard of health, safety and environment (HSE) practices in all the areas of our operations for all our stakeholders.

TOTAL INTEGRATED PROJECT MANAGEMENT SYSTEM



1 x 1000 MW
MANJUNG
POWER PLANT
Unit 4
Malaysia

A **MULTI-DISCIPLINARY** CONSTRUCTION COMPANY



PETROCHEMICAL
PLANTS / REFINERIES



ONSHORE
SURFACE FACILITIES



PETROLEUM PRODUCTS,
OIL & GAS DEPOTS, STORAGE
& TERMINALS



OIL AND GAS
PIPELINES &
METERING FACILITIES



AVIATION FUEL
HYDRANT & TERMINALS



REVAMP,
REJUVENATION
& DEBOTTLENECKING

OUR SERVICES

ENGINEERING

We have the capabilities to provide basic, extended basic and detailed design work to meet the requirements of safety, cost, efficiency of operations and process of systems for the various oil and gas, petrochemical and industrial plants.

- Civil and Structural Design
- Storage Tank Design
- Piping Isometrics
- As Built Drawings

PROCUREMENT

Efficient procurement service is vital to the success of all projects. Our strong network with relevant personnel of different suppliers enables us to prepare the material status report which includes submission of vendor drawings specification, manufacturing procedure, manufacturing schedule and quality check points among others.

- Pipes & Piping Bulk Materials
- Plates, Structures & Shapes
- Electrical & Instrument Bulk Materials
- Pressure Vessels
- Packaged Equipment

CONSTRUCTION MANAGEMENT

Our expertise and experience in plant construction gives us the edge to provide unrivaled, multi-disciplinary construction solutions.

- Green Field Construction
- Brown Field Construction
- Primavera Scheduling
- Interface Management
- Job Safety Analysis
- Constructivity Study
- Hazop Study

COMMISSIONING, MAINTENANCE & WARRANT

Our commissioning, maintenance & warranty team provides the critical finishing touches and follow-up vital to any project's proper start-up and operations.

- Provision of Labour/ Equipment
- Vendor Representation
- Compilation of Mechanical Catalogues and Quality Control Documents
- Warranty Maintenance

OUR SCOPE OF WORK



PROJECT HIGHLIGHTS

KEMAMAN, MALAYSIA

Kemaman Bitumen Refinery

● PROJECT SPECIFICATIONS

- PROJECT** : EPC of Kemaman Bitumen Refinery
LOCATION : Telok Kalong, Kemaman, Terengganu
CLIENT : Kemaman Bitumen Company Sdn Bhd
CONSTRUCTION PERIOD : 20 months



MAJOR WORKS QUANTITIES

CIVIL

Excavation	: 23,000 cum
Reinforced Concrete	: 4,500 cum
Road Work	: 2,150 m
Drain	: 9,600 m
Tank Foundation	: 27 nos.
Fire Proofing	: 1,800 m ²
Underground	
Concrete Pipe	: 1,200 m

BUILDING

Administration Building	: 30m x 15 m
Warehouse	: 43m x 23 m
Sub-Station (3 units)	: 18m x 9 m (x3)
Control Room	: 45m x 16 m
Canteen	: 30m x 20 m

TANKAGE (TOTAL WT: 5,500 MT)

Crude Oil Tank (4 units)	60m x 16mH
Asphalt Tank (4 units)	30m x 15 mH
Other Tanks (19 units)	

ELECTRICAL INSTRUMENTATION

Cable Ladder/Tray	: 5,300 m
Electrical Cable	: 10,500 m
Instruments Cable	: 51,200 m
Instruments	: 1,200 nos.
Switchboard	: 22 nos.
Heat Tracing	: 2,400 m

PIPING

Carbon Steel	: 80,000 dia-inch
SS 317	: 6,000 dia-inch
SS 316 L	: 12,000 dia-inch
Steam Tracing Line	: 13,000 m
Underground Steel Pipe	: 900 m

EQUIPMENT INSTALLED : 2,500 MT

PAINTING : 25,000 m²

INSULATION : 34,000 m²
 : 1,260 m² (Vessels)
 : 20,000 m (Pipes)

STEEL STRUCTURE : 1,600 MT

PROJECT HIGHLIGHTS

BINTULU, MALAYSIA

ASEAN Bintulu Fertilizer Plant



MAJOR WORKS QUANTITIES

CIVIL

Earthwork	: 2,500 cum
Concrete	: 5,020 cum
Drain	: 1.2 km

STRUCTURE

Equipment Erection	: 850 MT
New Equipment	: 58 nos. (1,300 MT)
Equipment modified	: 31 nos.
Equipment dismantling	: 63 nos.
Equipment refurbishment	: 14 nos.

PIPING

New Pipes	: 558 lines (C.S. 80,000 dia-inch)
Dismantle	: 533 lines
Tie-in point	: 899 nos.
RT	: 1,206 joints

DUCTING : 30 MT

PAINTING : 8,500 m²

INSULATION : 6,062 m²

ELECTRICAL

Cable laying	: 5,000m
Cable Termination	: 931 points
No. of motors	: 101 nos.

INSTRUMENTATION

Cable laying	: 6,000 m
Tubing	: 1,260 m
GI Conduit	: 613 nos.
No. of Instruments	: 120 nos.
Scaffolding	: 20,000 cum

● PROJECT SPECIFICATIONS

LOCATION : Bintulu, Sarawak, Malaysia

CLIENT : Asean Bintulu Fertilizer Sdn Bhd

PROJECT MANAGEMENT : KRUPP UHDE

CONSTRUCTION PERIOD : 18 months



PROJECT HIGHLIGHTS



PROJECT HIGHLIGHTS



OUR FACILITIES

FABRICATION

In keeping with Eversendai Group's objective to enhance its premier position in the business through engineering excellence and specialist construction services, the company has further developed its fabrication capacity to accommodate Eversendai's growing number of projects, boasting a combined annual fabrication capacity of over 150,000 metric tonnes.

Eversendai produces high quality fabricated structures and has the accreditation and certification from ASME

Boiler and Pressure Code U, U2, S and the R Symbol from the National Board of Boilers and Pressure Vessel Inspectors, for our facility at Hamriyah Free Zone, Sharjah, U.A.E .

All our fabrication factories are strategically located and have the capability and the capacity to fabricate and export high quality fabricated structures to any parts of the world on time.

Our fabrication factories are located at:

Rawang Malaysia

Total Area : 704,088 sq feet
Total Building Area : 265,341 sq feet

Open Yard Area : 438,747 sq feet
Fabrication Capacity : 24,000 tonnes



Al Quais Industrial Dubai

Total Area : 129,167 sq feet
Total Building Area : 86,111 sq feet

Open Yard Area : 43,056 sq feet
Fabrication Capacity : 12,000 tonnes



OUR FACILITIES

Trichy India

Total Area : 1,682,779 sq feet
Total Building Area : 97,311sq feet
Open Yard Area : 1,585,468 sq feet
Fabrication Capacity : 30,000 tonnes



Industrial Area Doha Qatar

Total Area : 424,952 sq feet
Total Building Area : 173,602 sq feet
Open Yard Area : 201,502 sq feet
Fabrication Capacity : 24,000 tonnes



Hamriyah Free Zone Sharjah

Total Area : 2,273,002 sq feet
Total Building Area : 686,533 sq feet
Open Yard Area : 1,586,470 sq feet
Fabrication Capacity : 60,000 tonnes



LIST OF PROJECTS

YEAR	PROJECT NAME	SCOPE OF WORK	MAIN CONTRACTOR
1993	Shell Easter Petroleum, Pulau Ular	Installation of Mechanical Works, Erection of Structural Steel Works	Chiyoda Corp - Mitsui-Keppel Consortium
1996	TPC II/BL-2 Project, Pulau Ayer Merbau	Installation of Mechanical Works, Erection of Structural Steel, Installation of Deck and Edge Plates	JSW & Sumitomo Construction Co. Ltd
1997	Palm Oleo 2 Project	Process Building, Tank Farm, Pipe Rack, Erection of Structural Steel, Alignment and Bolting Works	Geahin Engineering Berhad
1998	Petronas Fertilizer Complex, Gurun	Installation of Mechanical Works, Erection of Structural Steel, Alignment and Bolting Works	Mitsubishi Heavy Industries/ Cleveland EON Asia Sdn. Bhd.
1998	Kertih Aromatics Project	Installation of Mechanical Works & Structural Steel, Equipment, Tank and Piping Works	Toyo Engineering - Nam Fatt Fabricators Consortium
1998	Polyvinyl Alcohol Plant (PVA), Pulau Sakra	Installation of Mechanical Works, Supply, Fabrication, Painting and Erection of Structural Steel Works	Kuraray Engineering Co. Ltd.
1999	Silicon Wafer Fabrication Facilities	Installation of Mechanical Works, Site-Assembly and Erection of Structural Steel, Alignment and Bolting Works	Flour Daniel - Kvaerner Cleveland
2001	MLNG Tiga	Installation of Mechanical Works, Erection of Structural Steel for Pipe Racks, Pipe Sleepers, Accessories, Platforms and Access Ways	Dotanah Engineering & Contracting Sdn. Bhd.
2002	BP Nam Con Son Gas Project	Installation of Mechanical Works, Supply Material, Engineering, Fabrication & Export of Structural Steel Works	McConnell Dowell Constructor (Aus) Pty Ltd
2008	Kemaman Bitumen Refinery	Engineering, Procurement, Construction & Commissioning	Kemaman Bitumen Company Sdn. Bhd.
2009	Melaka Refinery PSR-2 Revamp Project	Civil Works Package 1 for Area A1 (Unit 22,23 & 25) and A2 (Unit 21,24,26,27 & 28)	Malaysian Refining Company Sdn. Bhd.
2009	Melaka Refinery PSR-2 Revamp Project	Design, Supply, Fabrication and Erection of Structural Steel	Malaysian Refining Company Sdn. Bhd.
2009	NKOM- Nakilat-Keppel Offshore & Marine	Energy center, workshop & paintcell store and superyacht hall - superstructures design, connection design, supply fabrication, painting, delivery, erection of structural steel works, fire proff, roof/ wall cladding works including doors	Qatar Gas Transport Company
2010	Algeria Oman Fertilizer Plant	Engineering, Fabrication, Surface Preparation & Painting and Export of Steel Structures of FOB basis	Shapoorji Pallonji Mideast LLC
2011	Sabah Oil & Gas Terminal	Supply, Fabrication, Surface Preparation, Painting and Delivery of Steel Structure	Samsung Engineering Malaysia Sdn Bhd
2011	Asean Bintulu Fertilizer Plant Rejuvenation Project	Main Construction Package	Asean Bintulu Fertilizer Sdn. Bhd.
2012	Tokuyama Malaysia Polycrystalline Silicon Project (TMP2)	Fabrication Drawings, Fabrication & Delivery to Site, Painting, Erection of Structural Steel	Taisei Corporation
2013	Petronas LNG Train 9	Shop Fabrication of Steel Structure	JGC (Malaysia) Sdn Bhd
2013	Garraf Development Facility Operation - FGCU and associated equipment for 15MW Power Plant	Supply and Delivery of Fuel Gas Conditioning Unit (FGCU) and associated equipments	Petronas Carigali Iraq Holding BV

EVERSENDAL OIL & GAS (M) SDN BHD

Level 5, Menara Mudajaya
12A, Jalan PJU 7/3, Mutiara Damansara
47810 Petaling Jaya
Selangor Darul Ehsan, Malaysia

Tel : +603 7710 3352

Fax : +603 7733 3351

Email : evsog@eversendai.com

www.eversendai-og.com