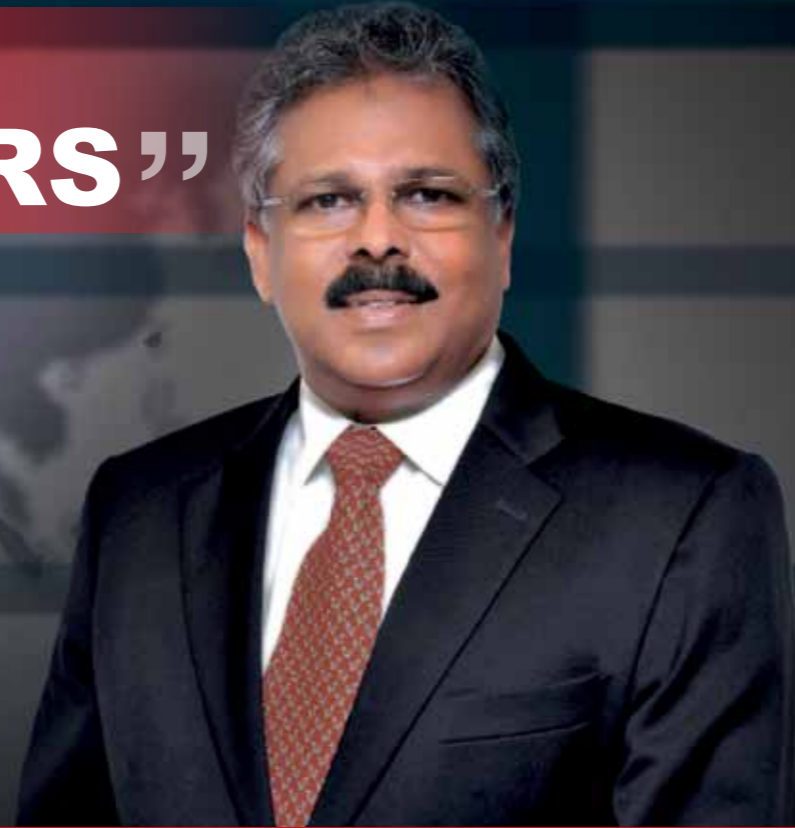


EVERSENDAI OFFSHORE



Moving to
New
FRONTIERS

“Moving To **NEW FRONTIERS**”



EVERSENDAI OFFSHORE is The history of Eversendai goes back to 1984 and after three decades of unparalleled experience, technical expertise and a strong network across various countries, Eversendai is recognised as a leading global organisation in undertaking turnkey contracts; delivering projects for high rise buildings, power plants, Oil & Gas upstream and downstream including process and industrial plants as well as infrastructure and composite structures in the Asian and Middle Eastern regions.

We have a dedicated workforce of over 10,000 people and an impressive portfolio of more than 300 accomplished projects in over 14 different countries with 5 steel fabrication factories located in Malaysia, Dubai, Sharjah, Qatar and India, with an annual capacity of 150,000 tonnes. With our state-of-the-art steel fabrication factories, we have constructed some of the world's most iconic landmark structures.

We have also just established a fabrication yard at a waterfront land measuring 200,000 sq metres with 550 metres of quayside at RAK Maritime City in Ras Al Khaimah, UAE. This facility will facilitate the Group's inroad into the offshore and marine fabrication sectors; with Eversendai Offshore undertaking various specialised Engineering, Procurement, Construction and Commissioning (EPCC) contracts for new build Self-Propelled Jack-Ups, Topside Decks, Jack-Up Rigs, Rig refurbishment and maintenance, Process Modules and Offshore Living Quarters, amongst others.

Eversendai Offshore has a very experienced team of multi-disciplined Engineers and Designers who have extensive experience ranging from Concept Design, Detailed Engineering, Procurement and Fabrication, to providing support for Commissioning. The focus of the team is to ensure doing it right the first time by using state-of-the-art technology in 3D modeling

in all disciplines and using the same to generate fabrication drawings, thus, providing quality and timely delivery.

As we move to new frontiers, we will be able to provide our clients the certainty and comfort of knowing that their projects are in capable and experienced hands. These developments will complement our vision, mission and core values. This will simultaneously allow us to remain one of the most successful organisations in the Asian and Middle Eastern regions and beyond with corresponding efficiency and reliability.

The successful and timely completion of our projects accompanied by soaring innovation, creativity and our aspiration to move to new frontiers have been the key drivers for achieving continuous growth through the years. We remain committed to these values and we believe, this stamps our firm intent to dominate the various industries which we are involved in and also marks the next phase in our development to be amongst the undisputed global market leaders.

Our strength lies in our resilient workforce whose skills, commitment and dedication serve the needs of our clients. An established management which overlooks the areas of planning, procurement, HSE and execution, combined with experienced managers, engineers alongside our workforce has made Eversendai a leading and innovative global organisation.

We are pleased to realise our aspirations of growing our business and we shall continually seek opportunities to globally expand our existing scope of operations.

This is just the beginning

Tan Sri A K Nathan
Executive Chairman & Group Managing Director

OUR **VISION**

- TO BE A GLOBAL LEADER BY INNOVATING, EXCELLING, AND SUSTAINING WITH CORE VALUES IN NEW FRONTIERS

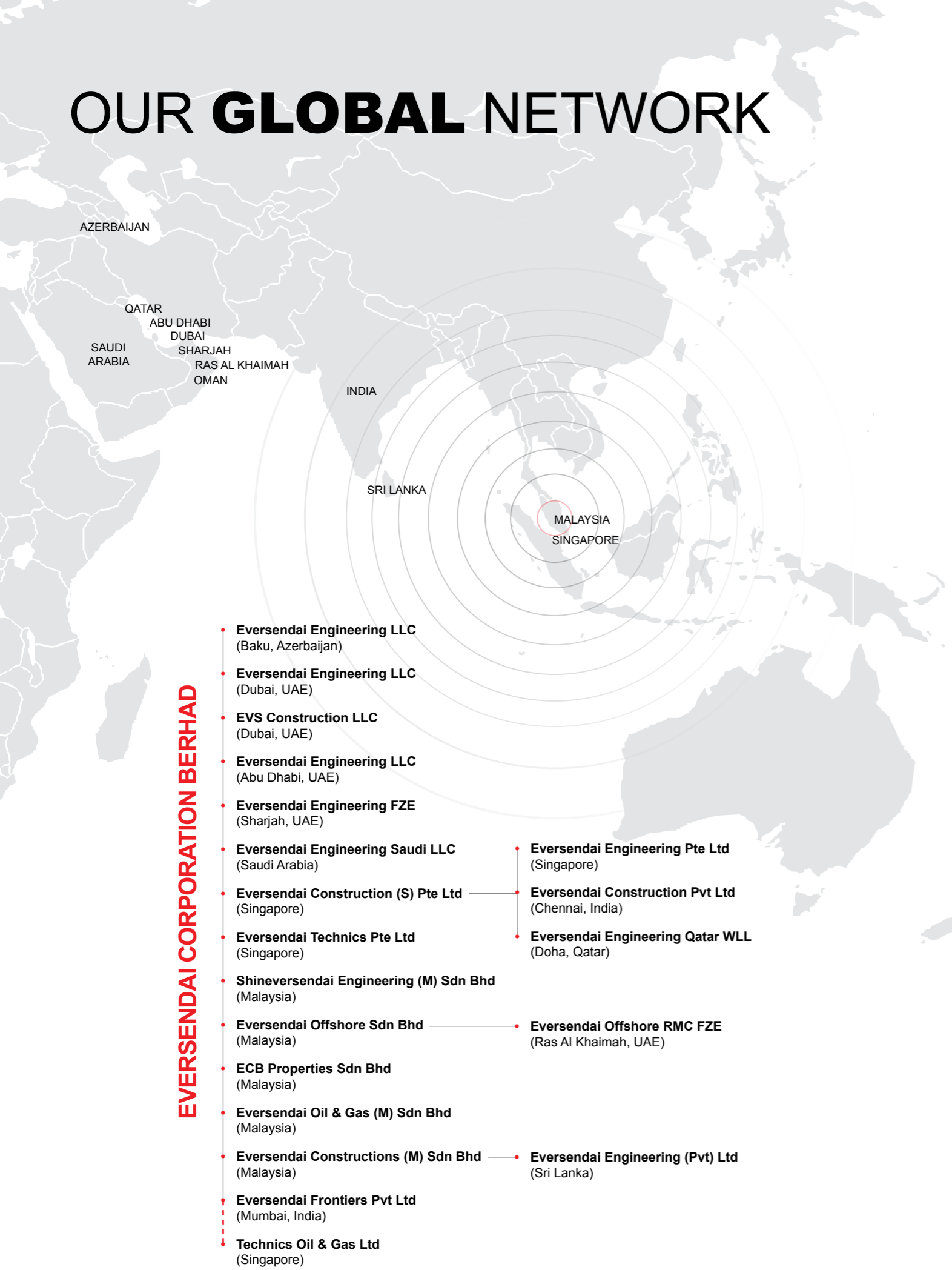
OUR **MISSION**

- WE AIM TO DELIVER SUSTAINABLE VALUE TO OUR STAKEHOLDERS BY FULFILLING OUR COMMITMENT TO OUR CLIENTS WHILE STRENGTHENING AND FORGING NEW TIES. WE ENDEAVOR TO MAINTAIN AND ENHANCE OUR CONSISTENT PERFORMANCE, WORK CULTURE AND STANDARDS. WE STRONGLY BELIEVE IN MAXIMISING THE VALUE OF HUMAN CAPITAL AND ALIGNING IT WITH COMPANY INITIATIVES AS A FUNDAMENTAL ELEMENT OF OUR BUSINESS OBJECTIVE

OUR **CORE VALUES**

- COMPLIANCE TO **SAFETY**
- CONFORMANCE TO **QUALITY**
- ADHERENCE TO **SCHEDULE**
- CONSISTENT CLIENT **SATISFACTION**

OUR GLOBAL NETWORK



OUR SCOPE OF WORK



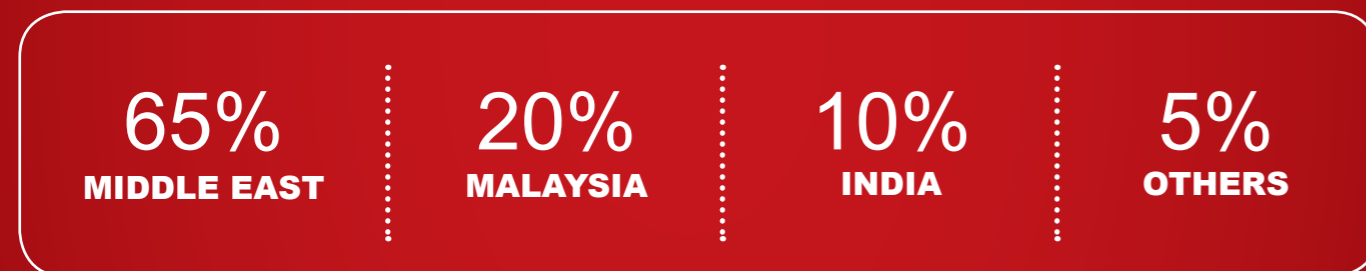
GROUP PROGRESSIVE GROWTH

OUR GROUP'S TURNOVER

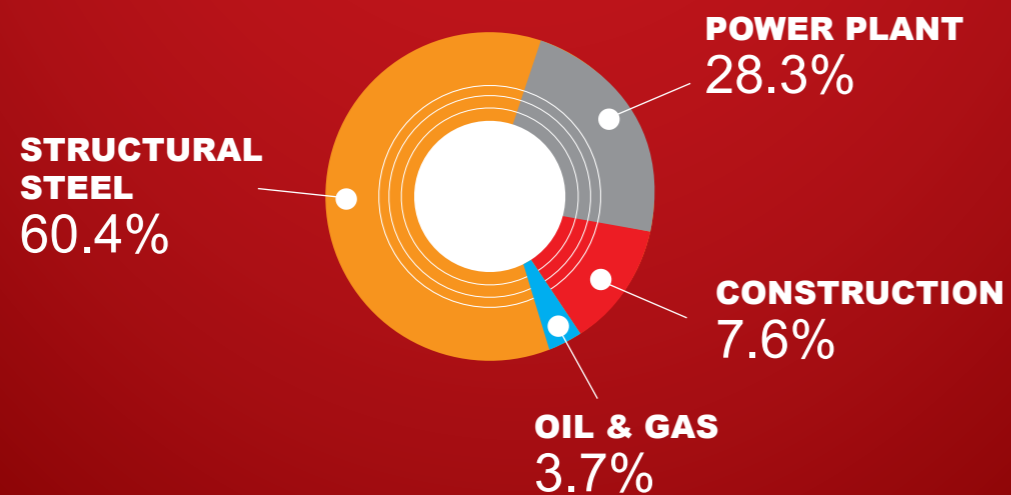
USD million

2009	2010	2011	2012	2013
255.5	233.9	323.3	319.4	301.8

OUR MARKETS



OUR BUSINESS STRUCTURE

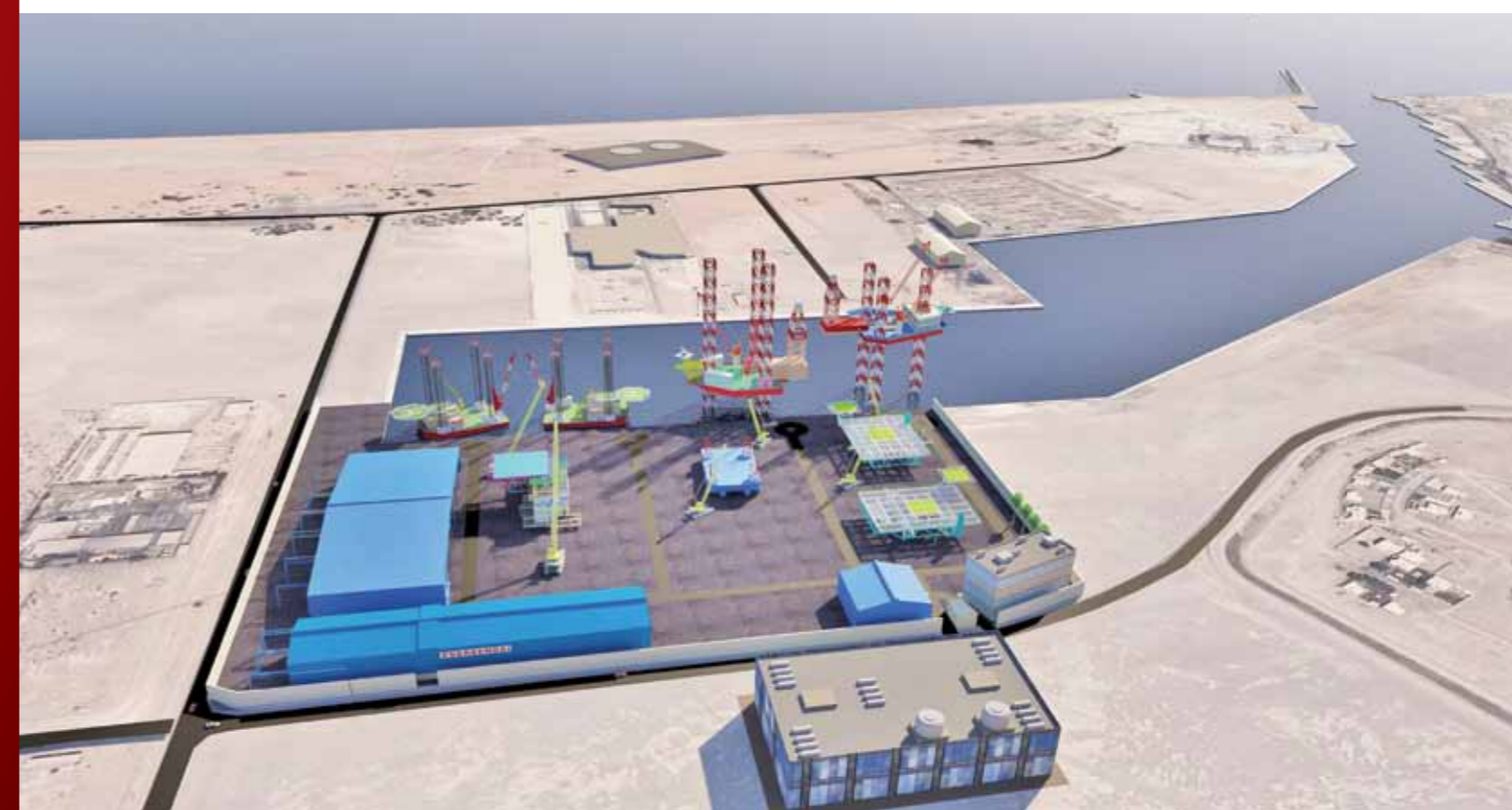
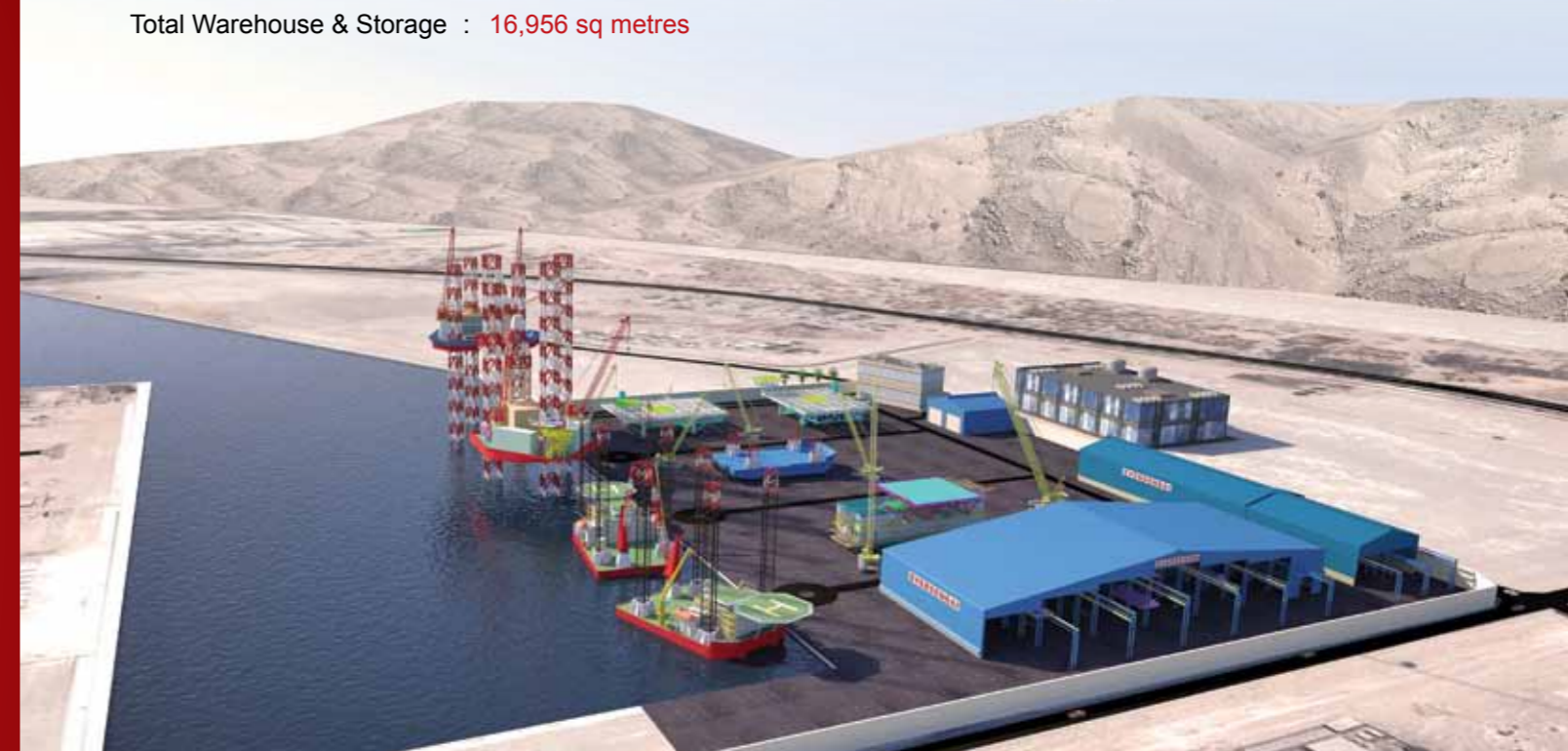


YARD FACILITY

Rak Maritime City Ras Al Khaimah

Total Land Area : 200,000 sq metres
 Quayside : 550 metres
 Open Yard : 82,720 sq metres
 Total Warehouse & Storage : 16,956 sq metres

Assembly Area : 82,720 sq metres
 Total Covered Fabrication Area : 27,920 sq metres
 Water Depth : 7 metres



OUR FACILITIES

Fabrication

In keeping with Eversendai Group's objective to enhance its premier position in the business through engineering excellence and specialist construction services, the company has further developed its fabrication capacity to accommodate Eversendai's growing number of projects, boasting a combined annual fabrication capacity of over 150,000 metric tonnes.

Eversendai produces high quality fabricated structures and has the accreditation and certification from ASME Boiler and Pressure Code U, U2, S and the R Symbol from the National Board of Boilers and Pressure Vessel Inspectors, for our facility at Hamriyah Free Zone, Sharjah, U.A.E .

All our fabrication factories are strategically located and have the capability and the capacity to fabricate and export high quality fabricated structures to any part of the world on time. Our fabrication factories are located at:

Rawang Malaysia

Total Area : 65,412 sq metres
 Total Building Area : 24,651 sq metres
 Open Yard Area : 40,761 sq metres
 Fabrication Capacity : 24,000 tonnes



Al Qusais Industrial Dubai

Total Area : 12,000 sq metres
 Total Building Area : 8,000 sq metres
 Open Yard Area : 4,000 sq metres
 Fabrication Capacity : 12,000 tonnes



Trichy India

Total Area : 156,335 sq metres
 Total Building Area : 9,040 sq metres
 Open Yard Area : 147,294 sq metres
 Fabrication Capacity : 30,000 tonnes



Industrial Area Doha Qatar

Total Area : 39,479 sq metres
 Total Building Area : 16,128 sq metres
 Open Yard Area : 18,720 sq metres
 Fabrication Capacity : 24,000 tonnes



Hamriyah Free Zone Sharjah

Total Area : 211,168 sq metres
 Total Building Area : 63,781 sq metres
 Open Yard Area : 147,387 sq metres
 Fabrication Capacity : 60,000 tonnes



OUR SERVICES

EPCC Oil & Gas Fabrication – Onshore

From the initial design, fabrication, pre-commissioning to final commissioning, our highly experienced and responsive Project Team is hands-on at each stage to ensure the timely completion of projects. With a client-oriented approach, our team always aims to deliver beyond expectations and to add value to our clients' growth and development. Our areas of expertise include:

- Process Modules & Skids
- Early Production Facilities
- Living Quarters

Self-Propelled Jack-Ups

Eversendai Offshore's strategic goal is to be the fabricator of choice in the growing demand for multi-purpose jack-ups and self-propelled jack-ups for the Oil & Gas and Renewables Market. These demanding industry sectors provide us with the opportunity to utilise our engineering skills, expertise, industry know-how and extensive experience in such complex projects.

New Build Jack-up Drilling Rigs

Eversendai Offshore is well placed to provide exceptional quality new build drilling rigs for the international market having a highly experienced team in this area with years of experience in new build jack-ups to include engineering, project management team, procurement, QA/HSE and dedicated skilled fabrication team.

- State-of-the-art facility for the construction of new build jack-up drilling rigs
- Highly sophisticated engineering capability
- Custom-built construction and load out facilities

New Build Offshore

Eversendai Offshore's expertise in the new build offshore segment extends beyond jack-up drilling rigs and covers a wide range of offshore structures.

The Company is established to provide high performance products built to the rigorous specifications and standards demanded by major oil companies.

- Design and construction of process modules for Floating Production, Storage and Offloading (FPSO)
- Mobile Offshore Production Units (MOPUs)
- Offshore drilling rig components and accessories
- Living quarters, turrets and other offshore fixed structures
- Tender Barges
- Topside Decks
- Jackets

Rig Refurbishment

The rig refurbishment scope varies in every project and can range from a simple repair to a major docking for the upgrade or replacement of old and damaged equipment and machineries.

Eversendai Offshore has established a new state of the art fabrication facility in RAK Maritime City in Ras Al Khaimah, UAE to specifically suit its docking operations which cater for most types of rig designs.

Eversendai Offshore is able to field a team of experienced design and construction engineering team with extensive knowledge in rig refurbishment to provide the following services and continuously deliver projects of the highest quality and complexity:

- Rig conversion and modification
- Engineering and technical support
- Drilling systems, hull equipment, engine replacement and re-power works
- Drilling configuration to accommodation/process
- Helideck construction, refurbishment, upgrade or replacement
- Leg repair, replacement, extension and strengthening
- Accommodation total refit, refurbishment, upgrade or extension



SELF-PROPELLED JACK-UP

Self-propelled jack-ups, referred to as liftboats, are able to provide well services support at offshore platforms and wellhead structures.

Eversendai has the capability to build self-propelled jack-ups with our team of qualified and experienced personnel without compromising on quality and delivery.

Each self-propelled jack-up will consist of a rectangular hull and four 95-metre, truss-type legs with an electric driven rack and pinion jacking system, which will allow the unit to jack up in water depths of up to a maximum of 70 metres.

The self-propelled jack-up's primary operating capabilities include accommodation for a minimum of 150 personnel, the ability to propel by its own thrusters to a speed of 5 knots and Dynamic Positioning System DPS-2.

These would provide effective solutions to offshore operations and maintenance.



Self-Propelled Jack-Up

ELECTRIC JACKING SYSTEM WITH RACK AND PINION

Effective lifting capacity/ pinion	90 t
Average pre-load holding	153 t
Maximum pre-load holding	204 t
Ultimate holding capacity	260 t
Platform lifting and lowering speed	Up to 0.8m/min

MAJOR EQUIPMENT

Main Engine	4 x 1500 kw, 690v
Emergency Engine	1 x 480 kw, 480v
Propulsion System	2 x 1200 kw (AFT) 2 x 1200 kw (FWD)
Dynamic Positioning	DPS-2
Main Crane	300 t at 16m Boom Length 45m
Auxiliary Crane	12.5 t at 30m Boom Length 30m

DECK LOADING

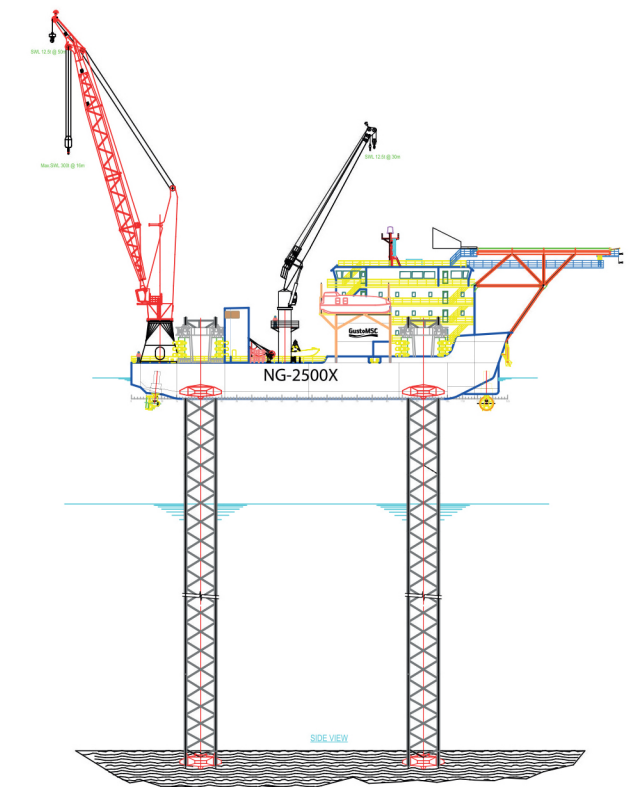
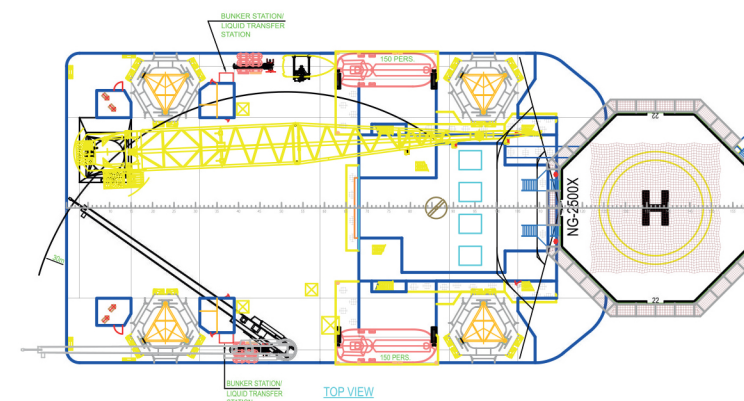
Variable Load	1300 t
Main Deck	10 t/m ² for deck plating and stiffeners 5 t/m ² for girders over full length
Machinery Area	1 t/m ²
Stores	2 t/m ²
Deck Area	800m ²

TANK CAPACITY

Portable Water	480 m ³
Fuel	420 m ³
Lube Oil	9 m ³
Dirty Oil	12 m ³
Fuel Oil Transfer	12 m ³ x 2

HELIDECK

Aluminium Helideck at bow CAP 437 Compliance	
Type	Sikorsky S61N or Equivalent
Dimensions	22.2 metres Diameter (D-Rating 22m)



PROCESS MODULES

Eversendai's EPCC Oil & Gas project secured from Petronas Carigali Iraq BV for Garraf Development Facility Operation. Our scope of work:

1 EPCC and Supply of Fuel Gas Conditioning Unit (FGCU)



Skids up to 4.5m elevation



Skids up to 6.5m elevation



Cooler and Platform Supply Vessel (PSV)



Chiller and MTR

2 EPCC and Supply of Compressor Package

3 EPCC and Supply of Fully Equipped & Commissioned Mini-Substation with Transformer



Compressor Skid



EVERSENDAI OFFSHORE

Eversendai Offshore RMC FZE
Subsidiary of Eversendai Corporation Berhad

45th Floor, Vision Tower
Business Bay, P.O. Box 116654
Dubai, UAE
Tel: (+971) 4 456 4815
Fax: +971) 4 456 4833

www.eversendaioffshore.com